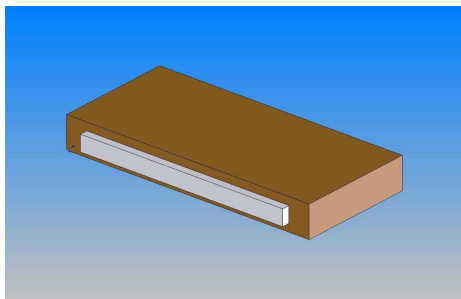


Wobbly Pulpit Repair - No.2

This document will describe how to improve the stability of pulpits that use the LDS2004A, LDS2005A, and LDS2006A pulpit lifts.

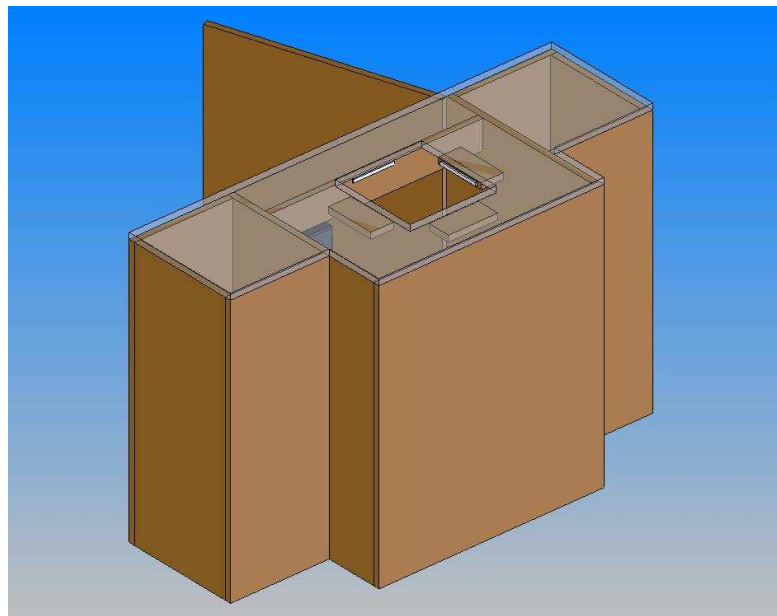
Purchase a package of "Felt Gard" 1/2"x6" Heavy Duty Felt Pads manufactured by Shepherd, part number 9954, from Home Depot. See the illustration on the right.

Attach one pad to the edge of a 1"x3"x6" oak (or other solid hardwood) board. For LDS2004A and LDS2005A in new pulpit cabinets, you will need to make up three of these board-pad assemblies. For all other instance you will need to make up four of these board-pad assemblies. See the illustration below.



In new pulpit cabinet installations remove the lectern and lift from the pulpit cabinet and apply a felt pad to the backside of the board that has the black control box mounted to it. You may be able to do this without removing the lectern, neck and lift, by carefully sliding a pad into place in this same location.

The illustration to the right shows an example of the pulpit cabinet with the lectern, neck, and lift removed. The top of the cabinet is transparent for the purpose of illustrating where to place the felt pads and the board-pad assemblies described earlier.



With the lift, neck, and lectern re-installed - place the board-pad assemblies described earlier in position on each side of the lectern neck as shown. Attach these to the bottom side of the cabinet top with grabber screws.

IMPORTANT: BE VERY CAREFULL OR YOU MIGHT DRIVE THE GRABBER SCREWS THROUGH THE TOP OF THE PULPIT CABINET! Use screw with a button head and a washer. Pre-drill all mounting holes.

DO NOT push these blocks against the neck too tightly. If they are too tight they will activate the pinch sensor and the lift will lower.

DO NOT position them too loosely or they will not have the desired effect and may even chatter as the lectern move up and down.

Using this method you can improve the stability of the LDS2004, LDS2005, and LDS2006 pulpit lifts.

If you have any questions please call:
Mark Eaton LLC at 801-756-5639.

Thank you.

